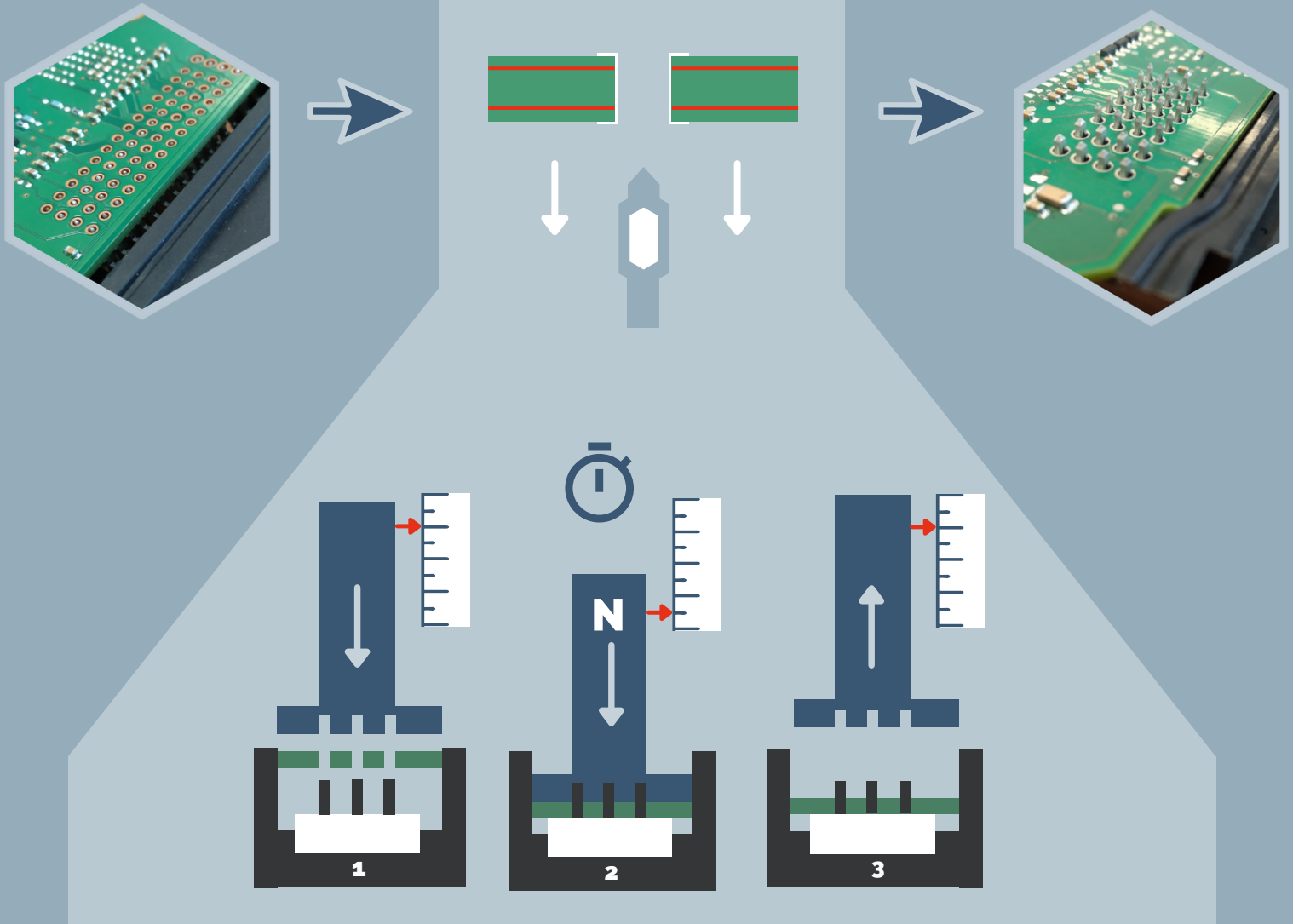




CONNECTOR PRESSFIT HVP



PROCESS DESCRIPTION

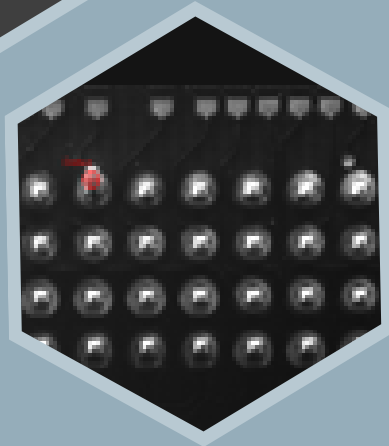
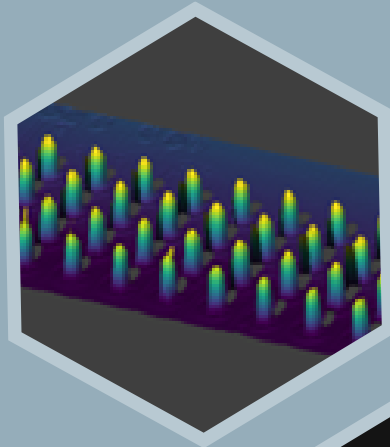
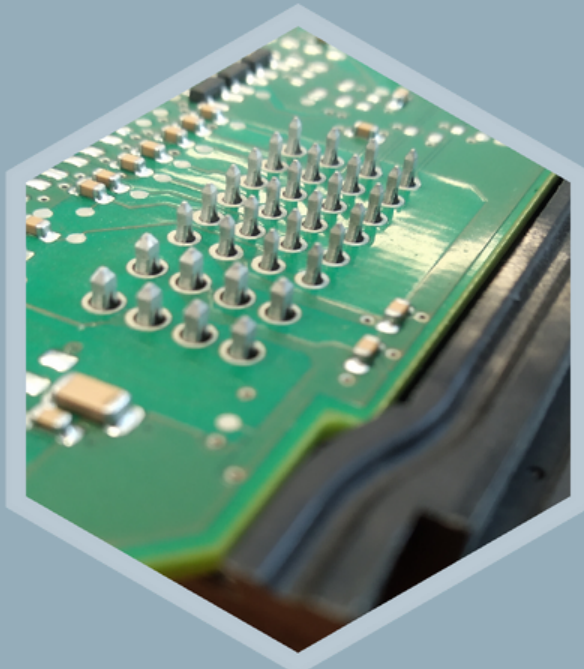
- ▶ Programmable speed
- ▶ **Actuated by electric Servo press** : travel and force control
- ▶ **Connectors placed in lower tool and PCB on top** : precision tooling ensuring accurate position and insertion
- ▶ Fully automatic process

TECHNICAL CHARACTERISTICS

- ▶ **Possible mass termination insertion** : several hundreds of pins
- ▶ **Ability** to pressfit straight or 90° head connectors
- ▶ **Insertion** force up to 35kN
- ▶ **Process cycle time** : typically 10 seconds or below
- ▶ **Fast tool changing** : short part number changeover (<5mn)

CONNECTOR PRESSFIT POST PROCESS CONTROL

A three-dimensional inspection performed after the pressfit process to confirm the compliance of the processed product.



TECHNICAL CHARACTERISTICS

- ▶ **Adapted to mass termination insertion** : several hundreds of pins
- ▶ **Scanning capacity** : 600x600mm
- ▶ **Accuracy and repeatability are application dependent** : feasibility tests in SEMO vision laboratory
- ▶ **Cycle time** : typically 7 seconds per PCB side
- ▶ **Multiple part number tooling**. Fast tooling change if needed

CONTROL DESCRIPTION

Compliance conditions of the control :

- ▶ Presence of all pins
- ▶ Length of all pins beyond PCB
- ▶ Straightness of all pins

Control can be performed on one or two sides of the PCB in the same cycle



2D and 3D vision controls are subjected to feasibility and machine architecture tests

CONNECTOR PRESSFIT MACHINE

BENEFITS

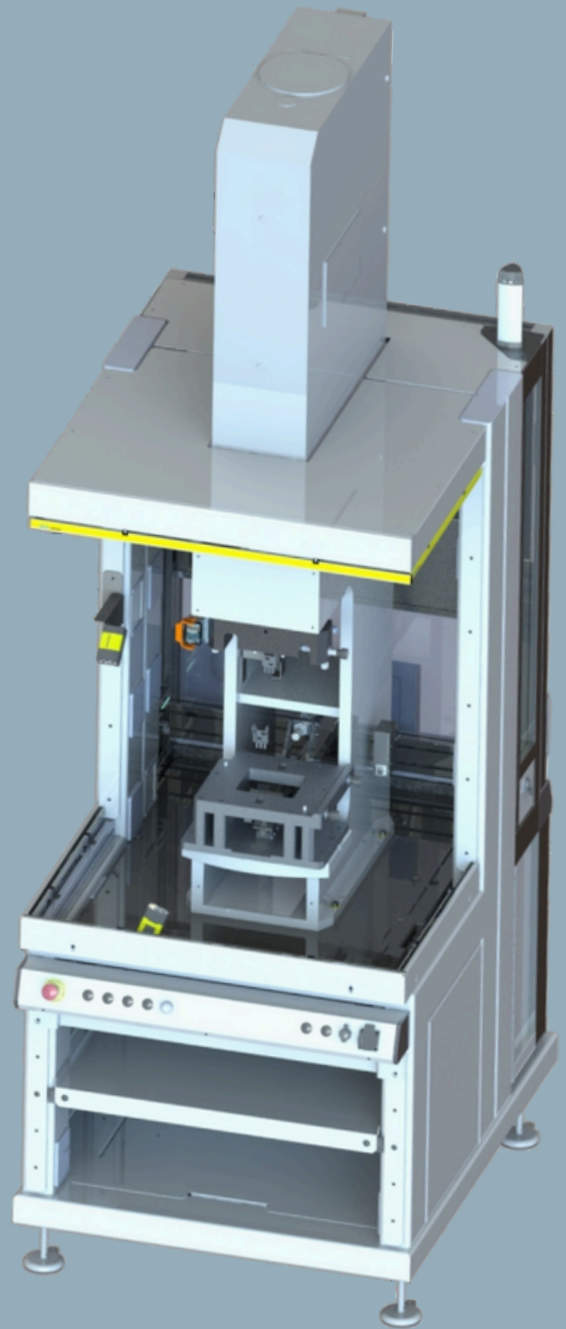
- ▶ Perfect for high volume production
- ▶ **Multi-part number machine** : tooling can be stored in the machine and quickly swoped
- ▶ **Fully automated process**. Can be loaded manually and is robot compatible
- ▶ **Short footprint** : less than 1.5m²

PROCESS CHARACTERISTICS

- ▶ **Board capacity** : 600x600mm
- ▶ **Process cycle time** : typically 10 seconds or below
- ▶ **Fast tool changing** : short part number changeover (>5mn)
- ▶ **Datamatrix** reading before process

TECHNICAL CHARACTERISTICS

- ▶ **Dimensions** : 1 x 1.4 x 2.4 m
- ▶ **Operating zone** : 320 x 240 x 150 mm
- ▶ **Weight** : 900 kg
- ▶ **Power supply** : 400V, 50Hz, three phases
- ▶ **Air supply** : 6 bars

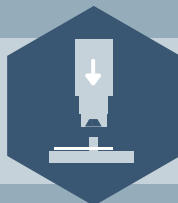


▶ Other processes available :

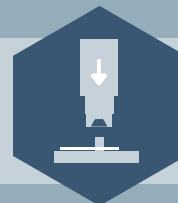
Dispensing & Potting



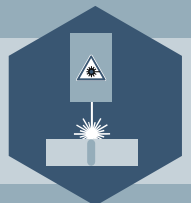
Heat Staking



Hot Air Riveting



Welding



OTHER SERVICES

ENGINEERING

- ▶ Machine adapted to your needs
- ▶ Full process realised with some products, in presence or not of the client.
- ▶ Fine tuning with experimentations results
- ▶ **Manufacturing of a pre-series** : around a thousand parts to adjust quality process

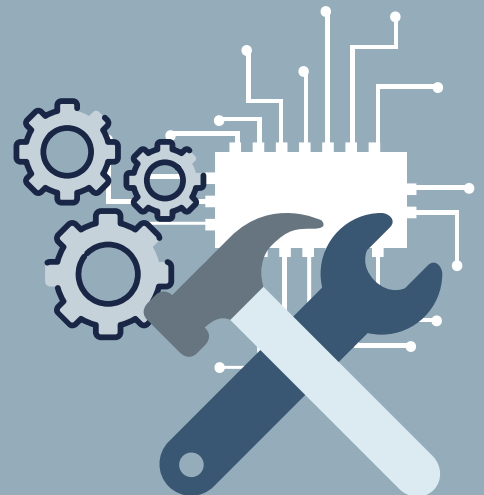


COMMISSIONING AND TRAINING

- ▶ Commissioning on your factory
- ▶ Training (different levels)
- ▶ Starting up of the equipment

ASSISTANCE

- ▶ Possibility to edit a maintenance contract
- ▶ Remote maintenance access
- ▶ Improvement of your equipment based on your feedback



+33 5 61 85 55 77
semo@semo.fr
10 rue Louis Breguet,
31700 Cornebarrieu, FRANCE

