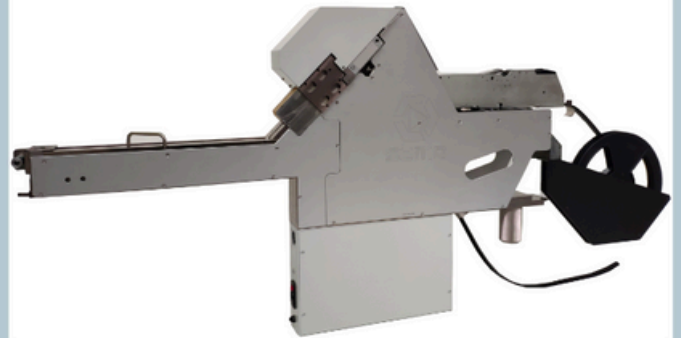
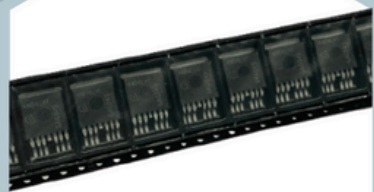


SPF : for components packaged in pocket tape and needing cutting, bending or forming



Width : 90mm

Dimensions : 1770 (1250 outside table)

Weight : 30 kg

Power supply : 110/220 Vac - 50/60 Hz

Air supply : 5 / 7 bar

FEATURES

- ▶ **For components packaged into pocket tape and which pins need :**
 - cutting
 - and / or bending
 - and / or forming
- ▶ Ability to unpackage from pocket tape
- ▶ Ability to perform up to three of these processes in the same feeder

BENEFITS

- ▶ Use of standard components from electronic supplier
- ▶ No need for additional off-line machine to perform
- ▶ Component traceability (managed by pick-and-place machine)

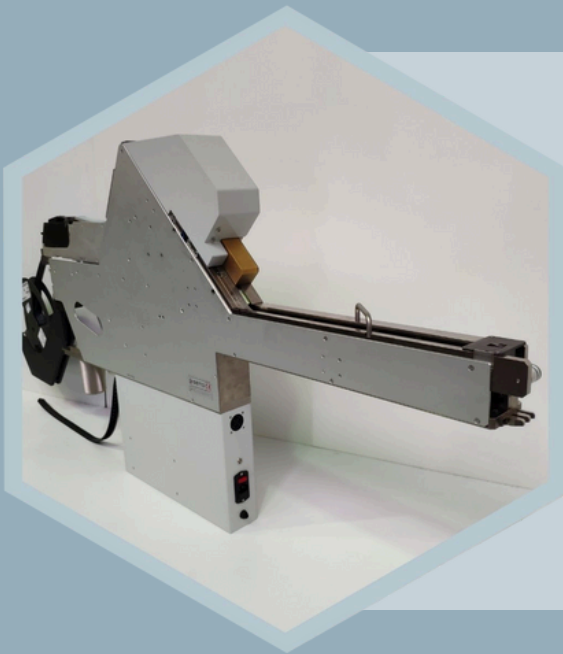
DID YOU KNOW ?

What to do when your component is discontinued ?

SEMO Feeders can be recycled

We can reconfigure to new components, test, upgrade and provide the new full warranty: **a new life for your feeder and some savings for you.**





INTEGRATION WITH PICK-AND-PLACE MACHINES

- Possible integration with many pick-and-place machines
- SEMO feeders can communicate with pick-and-place machines or can function manually for tests and maintenance.

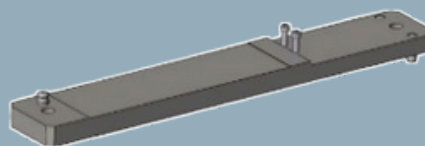
CHARACTERISTICS

- ▶ **Automatic startup with cycle time < 2s**
- ▶ **Pocket type reels** : tape width : 8 / 12 / 16 / 24 / 32 / 44 on SPF 80 or on request for wider tape.
- ▶ **Repeatability of positioning** : < 0.1 mm
- ▶ **SEMO Feeder can be mounted on a changeover table** every 80 mm
- ▶ **Optional communication for optimal synchronization** with pick and place machine
- ▶ **A mobile crutch supports the feeders weight** once mounted on a placement machine
- ▶ **Optimal reel holder**
- ▶ **Reconfigurable** if you need to convert your feeder to another component

ACCESSORIES

Trolley :

- ▶ To handle feeders
- ▶ Electrical/Pneumatic connections plate
- ▶ Storage box with four drawers
- ▶ Additional storage interface



+33 5 61 85 55 77
semo@semo.fr
10 rue Louis Breguet,
31700 Cornebarrieu, FRANCE

