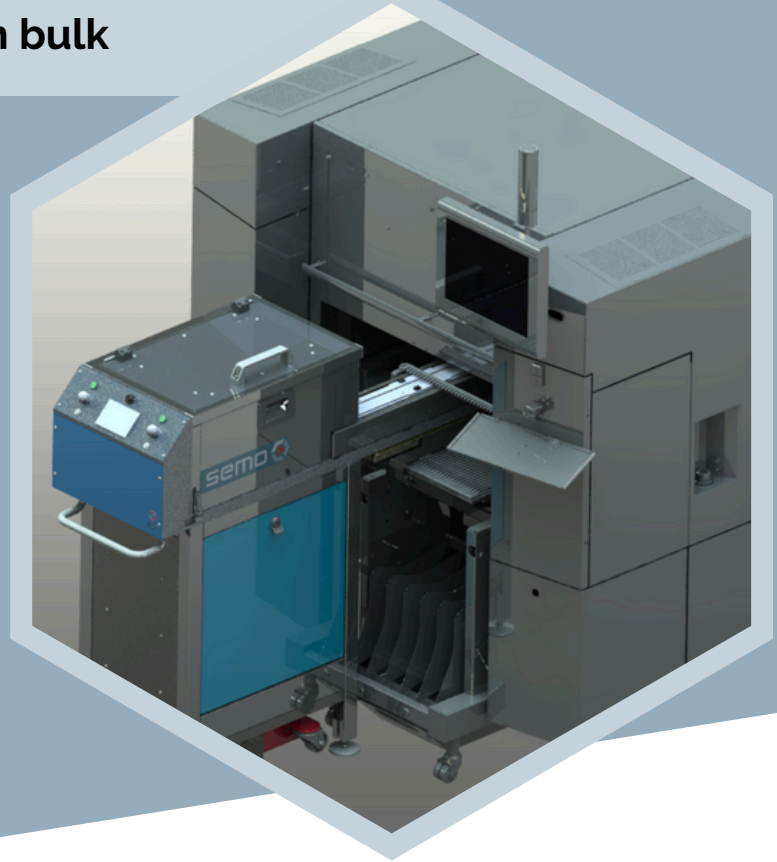
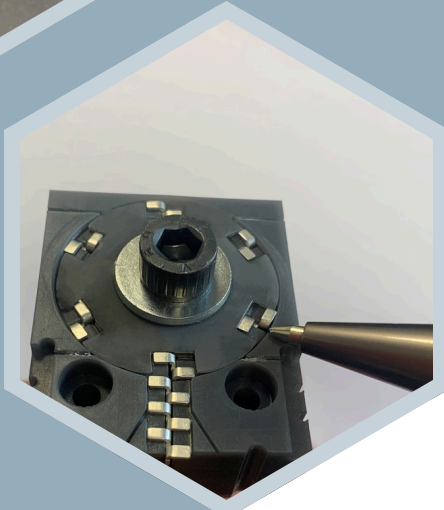


VF : for components packaged in bulk



From  
bulk

To fed



## GENERAL CONCEPT

**Width** : 120 mm on the table

**Length** : depends on the component

**Loading height** : 1050mm

**Power supply** : 110/240 Vac -  
50/60 Hz

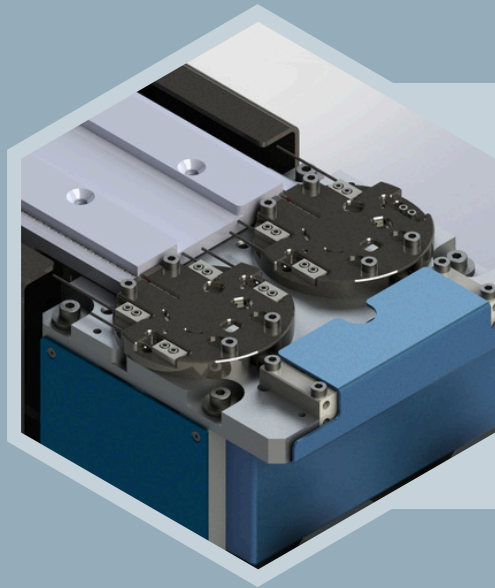
**Air supply** : 5 / 7 bar

- ▶ Integrated ground-rolling handling mean : ability to easily and quickly remove from or plug to the pick-and-place machine
- ▶ Nice and easy touch screen HMI
- ▶ Each part separated from following one for proper picking
- ▶ Design for a maximum cleanliness



## DID YOU KNOW ?

VF feeders uses a very limited space on the table (usually 120 mm even with 2 tracks) leading space for the feeders.



## INTEGRATION WITH PICK-AND-PLACE MACHINES

- Possible integration with many pick-and-place machines
- SEMO feeders can communicate with pick-and-place machines or can function manually for tests and maintenance.

## CHARACTERISTICS

- ▶ Possibility to integrate multiple bowls
- ▶ Possibility to have multiple tracks per bowl
- ▶ Cycle time : below 1s per track depending on the component
- ▶ Automomy : several thousands of parts (TBC with part drawing)
- ▶ Parts replenishment without stopping production
- ▶ Repeatability of positioning : <math><0.1\text{mm}</math>
- ▶ SEMO Bulk Feeder can be mounted on a changeover table every 120mm
- ▶ Optional communication for optimal synchronization with pick and place machine
- ▶ Integrated handling mean enable to roll on the floor to remove from or plug to the feeder in the pick-and-place machine



Integrated ground-rolling handling mean



**+33 5 61 85 55 77**  
**[semo@semo.fr](mailto:semo@semo.fr)**  
**10 rue Louis Breguet,**  
**31700 Cornebarrieu, FRANCE**

